

62

LIBRARY
RECEIVED
★ APR 10 1957 ★
U.S. Department of Agriculture

Wood's Special Prices for Market Gardeners and Truckers

These prices are for the exclusive use of Market Gardeners and Truckers who, on account of the large quantities of seeds they require, are entitled to these special prices.

Prices quoted effective March 20, 1957, are subject to change without notice. All prices are F.O.B. Richmond, Va. If to be sent by parcel post, postage must be added to the remittance.

TERMS are net cash with the order unless you have an account with us or can give us satisfactory references.

Warranty and Limitation of Liability: All sales of seeds, bulbs and plants are made upon the express condition that in the event they are not true to name and kind as represented at the time of sale, or are not as described on the label or container within recognized tolerances, the liability of the seller is limited in every instance to the purchase price of such seeds, bulbs and plants. Subject to this limitation T. W. Wood & Sons warrants that the seeds, bulbs and plants it sells are as described on the label or container within recognized tolerances. It gives no other warranty, express or implied, and assumes no responsibility as to the crop produced.



A field of Stringless Green Pod Beans at Our Growing Station in Idaho

GARDEN BEANS or SNAPS Bags = 100 lbs.
Idaho grown and field inspected by the Idaho Crop Improvement Association, Inc.
GREEN PODDED VARIETIES

	3 to 24 lbs.	25 to 49 lbs.	50 to 99 lbs.	Bag lots
Bountiful or Early Six Weeks...	.28	.27	.26	.24
Burpee's Stringless Green Pod..	.26	.25	.24	.22
Commodore (Dwarf Ky. Wonder)	.40	.39	.38	.36
Contender26	.25	.24	.22
Full Measure29	.28	.27	.25
Giant Stringless Green Pod27	.26	.25	.23
Seminole Stringless29	.28	.27	.25
Stringless Black Valentine27	.26	.25	.23
Stringless Red Valentine28	.27	.26	.24
Sulphur or Brimstone30	.29	.28	.26
Stringless Horticultural32	.31	.30	.28
Taylor Long Pod Horticultural..	.33	.32	.31	.29
Tendergreen28	.27	.26	.24
Tenderlong 1528	.27	.26	.24
Tennessee Green Pod.....	.28	.27	.26	.24
Top Crop28	.27	.26	.24
Wade28	.27	.26	.24
White Half Runner30	.29	.28	.26
Early Spartan Striped Half Runner (Light Brown Strain).....	.29	.28	.27	.25
Red Kidney29	.28	.27	.25

WAX PODDED BEANS—Idaho Grown

	3 to 24 lbs.	25 to 49 lbs.	50 to 99 lbs.	Bag lots
Bountiful Wax28	.27	.26	.24
Cherokee or Valentine Wax28	.27	.26	.24
Top Notch Golden Wax31	.30	.29	.27
Pencil Pod Black Wax28	.27	.26	.24
Surecrop Stringless Wax28	.27	.26	.24

BUSH LIMA BEANS

	3 to 24 lbs.	25 to 49 lbs.	50 to 99 lbs.	Bag lots
Dixie White Butter Pea28	.27	.26	.24
Wood's Prolific Bush Lima27	.26	.25	.23
Henderson's Bush Lima25	.24	.23	.21
Thorogreen (Green Henderson)..	.27	.26	.25	.23
Jackson Wonder (Speckled).....	.25	.24	.23	.21
Fordhook Bush Lima 24231	.30	.29	.27
Burpee's Improved Bush Lima..	.29	.28	.27	.25

GARDEN BEANS

	3 to 24 lbs.	25 to 49 lbs.	50 to 99 lbs.	Bag lots
POLE OR CORNFIELD BEANS				
Ky. Wonder, Brown Seeded28	.27	.26	.24
White Ky. Wonder No. 191....	.29	.28	.27	.25
London Horticultural28	.27	.26	.24
Nancy Davis or Creaseback28	.27	.26	.24
Genuine Cornfield30	.29	.28	.26
McCaslan29	.28	.27	.25
Missouri Wonder30	.29	.28	.26
Ideal Market29	.28	.27	.25
Kentucky Wonder Wax36	.35	.34	.32

POLE LIMA BEANS

	3 to 24 lbs.	25 to 49 lbs.	50 to 99 lbs.	Bag lots
Wood's Improved Pole Lima28	.27	.26	.24
Small Lima or Sieva25	.24	.23	.21
Florida Speckled or Calico.....	.26	.25	.24	.22
Giant Speckled Pole Lima29	.28	.27	.25
Carpinteria Pole Lima29	.28	.27	.25
Large White Pole Lima29	.28	.27	.25
King of the Garden Lima29	.28	.27	.25
Scarlet Runners33	.32	.31	.29

GARDEN CORN Bags = 100 lbs.

	3 to 24 lbs.	25 to 49 lbs.	50 to 99 lbs.	Bag lots
EARLY and EXTRA EARLY VARIETIES				
Bland's Extra Early21	.20	.19	.17
Extra Early Adams21	.20	.19	.17
Ideal or Big Early Adams20	.19	.18	.16
Trucker's Favorite18	.17	.16	.14
Norfolk Market18	.17	.16	.14
Hickory King17	.16	.15	.13
Hybrid Trucker's Favorite26	.25	.24	.22

SWEET or SUGAR VARIETIES—Bags = 100 lbs.

	3 to 24 lbs.	25 to 49 lbs.	50 to 99 lbs.	Bag lots
HYBRID CORNS				
Hybrid Stowell's Evergreen....	.38	.37	.36	.34
Ioana Hybrid35	.34	.33	.31
Golden Cross Bantam Hybrid..	.35	.34	.33	.31
Aristogold Bantam Evergreen..	.51	.50	.49	.47
Iochief Hybrid40	.39	.38	.36

OPEN POLLINATED

	3 to 24 lbs.	25 to 49 lbs.	50 to 99 lbs.	Bag lots
Golden or Bantam Evergreen....	.27	.26	.25	.23
Golden Bantam26	.25	.24	.22
Golden Giant27	.26	.25	.23
Black Mexican29	.28	.27	.25
Country Gentleman26	.25	.24	.22
Stowell's Evergreen25	.24	.23	.21

POP CORN

	3 to 24 lbs.	25 to 49 lbs.	50 to 99 lbs.	Bag lots
Purdue 31 Hybrid45	.44	.43	.41
White Rice27	.25	.23	.21
South American27	.25	.23	.21



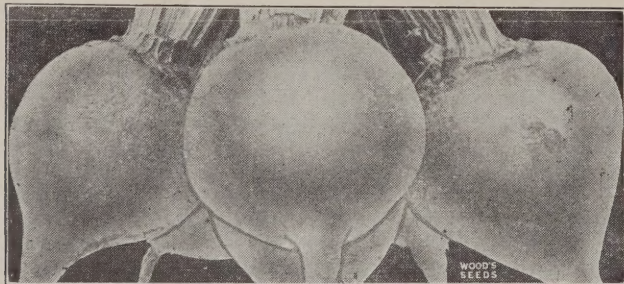
Harvesting a field of Thomas Laxton Peas at our Growing Station in Idaho

GARDEN PEAS	Bags = 100 lbs.			
	3 to 24 lbs.	25 to 49 lbs.	50 to 99 lbs.	Bag lots
SMOOTH SEEDED VARIETIES				
Wood's Pedigree Extra Early..	.22	.21	.20	.18
First and Best22	.21	.20	.18
Extra Early Alaska Wilt-Resist.	.21	.20	.19	.17
Large Podded Alaska (Ameer)..	.24	.23	.22	.20
Early Bird or Laxton's Superb..	.26	.25	.24	.22
Large White Marrowfat26	.25	.24	.22
Wando25	.24	.23	.21

WRINKLE SEEDED EARLY				
	3 to 24 lbs.	25 to 49 lbs.	50 to 99 lbs.	Bag lots
Thomas Laxton25	.24	.23	.21
Laxton's Progress No. 927	.26	.25	.23
Laxtonian or Hundredfold27	.26	.25	.23
Gradus25	.24	.23	.21
Little Marvel26	.25	.24	.22
Nott's Excelsior24	.23	.22	.20
Premium Gem24	.23	.22	.20
American Wonder24	.23	.22	.20
Blue Bantam27	.26	.25	.23

WRINKLE SEEDED LATE				
	3 to 24 lbs.	25 to 49 lbs.	50 to 99 lbs.	Bag lots
Bliss Everbearing—Sold Out				
Dwarf Telephone or Daisy26	.25	.24	.22
Alderman (Tall)25	.24	.23	.21
Dark Green Telephone (Tall)..	.25	.24	.23	.21
Champion of England (Tall)25	.24	.23	.21

SUGAR or EDIBLE PODDED				
	3 to 24 lbs.	25 to 49 lbs.	50 to 99 lbs.	Bag lots
Mammoth Luscious Sugar26	.25	.24	.22
Dwarf Gray Sugar22	.21	.20	.18



GARDEN BEETS	1 to 4-lb. Lots	5 to 9-lb. Lots	Larger Lots
	Early Wonder	\$.95	\$.90
Crimson Globe95	.90	.85
Crosby's Egyptian95	.90	.85
Detroit Dark Red95	.90	.85
Improved Early Blood95	.90	.85
Extra Early Egyptian95	.90	.85
Swiss Chard Spinach Beet95	.90	.85

STOCK BEETS or MANGELS			
	1 to 4-lb. Lots	5 to 9-lb. Lots	Larger Lots
Mammoth Prize Long Red85	.80	.75
Silesian Sugar85	.80	.75
Golden Tankard85	.80	.75

ASPARAGUS	1 to 4-lb. Lots	5 to 9-lb. Lots	Larger Lots
	Washington Rust Resistant	\$1.75	\$1.65

ASPARAGUS ROOTS—Washington: 1-year-old roots, \$21.00 per 1,000.

ARTICHOKE—Green Globe—Crop Failed.

BROCCOLI			
	1 to 4-lb. Lots	5 to 9-lb. Lots	Larger Lots
Italian Salad	1.00	.95	.90
Calabrese Green Sprouting	2.00	1.90	1.85

BRUSSELS SPROUTS—Long Island			
	1 to 4-lb. Lots	5 to 9-lb. Lots	Larger Lots
	3.65	3.55	3.50



CABBAGE	1 to 4-lb. Lots	5 to 9-lb. Lots	Larger Lots
	EARLY VARIETIES		
Copenhagen Market	3.00	2.90	2.80
Selected Early Jersey Wakefield....	2.50	2.40	2.30
Charleston Wakefield	2.45	2.35	2.25

EARLY and SECOND EARLY VARIETIES			
	1 to 4-lb. Lots	5 to 9-lb. Lots	Larger Lots
Ferry's Round Dutch	2.60	2.50	2.40
Early Flat Dutch	2.45	2.35	2.25
All Head Early	2.45	2.35	2.25
All Season	2.90	2.80	2.70

LATE or WINTER VARIETIES			
	1 to 4-lb. Lots	5 to 9-lb. Lots	Larger Lots
Large Late Drumhead	2.25	2.15	2.10
Large Late Flat Dutch	2.25	2.15	2.10
P. H. Late Flat Dutch	2.40	2.30	2.20
Short Stem Danish Ballhead	2.75	2.65	2.55
Chieftain Savoy	2.25	2.15	2.10
Mammoth Rock Red	2.30	2.20	2.10

YELLOWS RESISTANT VARIETIES			
	1 to 4-lb. Lots	5 to 9-lb. Lots	Larger Lots
Marion Market	3.00	2.90	2.80
Wisconsin All Season	3.50	3.40	3.30
Wisconsin Hollander No. 8	3.00	2.90	2.80

CHINESE PETSAL—Wong Bok			
	1 to 4-lb. Lots	5 to 9-lb. Lots	Larger Lots
	1.20	1.10	1.00

CARROT	1 to 4-lb. Lots	5 to 9-lb. Lots	Larger Lots
	Imperator	1.45	1.40
Scarlet Intermediate	1.75	1.70	1.65
Nantes Improved Coreless	1.55	1.50	1.45
Half Long Danvers	1.45	1.40	1.35
Red Cored Chantenay	1.45	1.40	1.35
Improved Long Orange	1.45	1.40	1.35

CAULIFLOWER	Oz.	¼-lb.	1 to 4 lbs.
	Danish Giant (Dry Weather)	1.40	4.20
Earliest Snowball	1.40	4.20	14.00

CELERY	1 to 4-lb. Lots	5 to 9-lb. Lots	Larger Lots
	Giant Pascal	4.00	3.90
Improved White Plume	5.50	5.40	5.30
Golden Self Blanching	5.00	4.90	4.80

CELERIAC—Large Smooth Prague..			
	1 to 4-lb. Lots	5 to 9-lb. Lots	Larger Lots
	4.00	3.90	3.80

COLLARDS

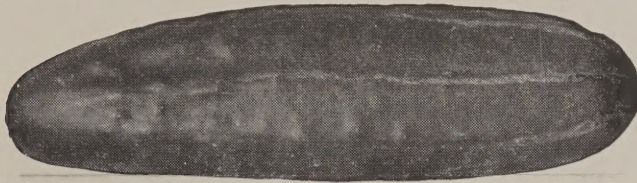
	2 to 4-lb. Lots	5 to 9-lb. Lots	Larger Lots
Carolina Header	\$1.25	\$1.15	\$1.10
Vates (Non-Heading)	1.20	1.10	1.00
North Carolina Short Stem	.75	.70	.65
White or Cabbage	.70	.65	.60
Georgia or Southern	.65	.60	.55

CORN SALAD

	1 to 4-lb. Lots	5 to 9-lb. Lots	Larger Lots
CORN SALAD	1.85	1.80	1.75

CRESS

	1 to 4-lb. Lots	5 to 9-lb. Lots	Larger Lots
Water	\$6.50	\$6.40	\$6.30
Curled or Pepper Grass	.85	.80	.75
Upland Cress	1.50	1.45	1.40



CUCUMBER

	1 to 4-lb. Lots	5 to 9-lb. Lots	Larger Lots
Early Surecrop Hybrid, Oz. \$3.00; ¼ lb. \$10.00; \$35.00 lb.			
Smoothie	2.50	2.40	2.30
Earligreen	2.20	2.10	2.00
Santee	2.15	2.05	1.95
Straight 8	1.90	1.80	1.70
Early White Spine	1.65	1.55	1.45
Early Fortune	1.65	1.55	1.45
Improved Long Green	2.00	1.90	1.80
A & C or Colorado	2.00	1.90	1.80
Palmetto	2.50	2.40	2.30
Marketer	2.00	1.90	1.80
White Wonder	1.90	1.80	1.70
Green Prolific or Early Short Stem	1.90	1.80	1.70
Early Green Cluster	1.60	1.50	1.40
Boston Pickling	1.60	1.50	1.40
National Pickling	1.60	1.50	1.40
Gherkin or Burr, for pickles	2.40	2.30	2.20
Ashley	2.30	2.20	2.10
Stono	2.50	2.40	2.30

EGG PLANT

Black Beauty	5.20	5.10	5.00
Florida High Bush	5.50	5.40	5.30

ENDIVE

Green Curled	1.30	1.25	1.20
--------------	------	------	------

HORSE RADISH ROOTS—50¢ per dozen; 50 for \$1.25; \$2.00 per 100.

KALE or BORECOLE

	2 to 4-lb. Lots	5 to 9-lb. Lots	Larger Lots
Early Curled Siberian, Long Standing	\$.90	\$.80	\$.70
Dwarf Blue Curled Scotch	1.10	1.00	.90
Spring Kale or Spring Sprouts	.40	.38	.37
Slow Seeding	1.25	1.15	1.05

KOHL RABI—Early White Vienna

	1 to 4-lb. Lots	5 to 9-lb. Lots	Larger Lots
KOHL RABI—Early White Vienna	2.20	2.10	2.00

LEEK—Large Flag

LEEK—Large Flag	3.00	2.85	2.75
-----------------	------	------	------

LETTUCE

HEADING VARIETIES

	1 to 4-lb. Lots	5 to 9-lb. Lots	Larger Lots
Wood's Cabbage	1.85	1.80	1.75
Improved Big Boston	1.65	1.60	1.55
Great Lakes, R-200 Strain	4.45	4.35	4.25
Iceberg	1.80	1.75	1.70
Imperial 44	3.50	3.40	3.30

LOOSELEAF VARIETIES

Salad Bowl	3.50	3.40	3.30
Early Curled Simpson or Silecia	1.65	1.60	1.55
Black Seeded Simpson	1.65	1.60	1.55
Grand Rapids	1.65	1.60	1.55
Crisp as Ice	3.00	2.90	2.80
Cos or Romaine, dark green	1.80	1.75	1.70
Chicken Lettuce	1.80	1.75	1.70



CANTALOUPE or MUSKMELLON

	1 to 4-lb. Lots	5 to 9-lb. Lots	Larger Lots
Wood's Perfection	\$2.05	\$2.00	\$1.95
Extra Early Hanover	2.40	2.35	2.30
Wood's Early Rocky Ford	2.40	2.35	2.30
Rocky Ford Netted Gem (green flesh)	1.80	1.75	1.70
Improved Rocky Ford, Jr.	2.05	2.00	1.95
Early Knight	2.20	2.15	2.10
Pride of Wisconsin	1.90	1.85	1.80
Hearts of Gold	1.80	1.75	1.70
Hale's Best No. 36	1.70	1.65	1.60
Hale's Best, Jumbo Strain	1.70	1.65	1.60
Gold Lined Rocky Ford	1.80	1.75	1.70
Long John	2.05	2.00	1.95
Large Hackensack or Turk's Cap	2.05	2.00	1.95
Hollybrook Luscious	2.00	1.95	1.90
Banana	1.80	1.75	1.70
Honey Dew	2.00	1.95	1.90
Glass or Mango, for preserves & Pickle	2.20	2.15	2.10

WATERMELON

Sugar Baby	3.90	3.85	3.80
New Hampshire Midget	2.00	1.95	1.90
Congo	1.70	1.65	1.60
Congo, Certified	2.10	2.05	2.00
Improved Kleckley's Sweet	1.40	1.35	1.30
Stone Mountain	1.40	1.35	1.30
Florida Favorite	1.40	1.35	1.30
Tom Watson	1.40	1.35	1.30
Improved Ga. or Aug. Rattlesnake	1.40	1.35	1.30
Florida Giant or Cannonball	1.40	1.35	1.30
Garrison or Darlington	1.75	1.70	1.65
Preserving Citron	1.70	1.65	1.60

WILT-RESISTANT VARIETIES

Fairfax Wilt and Anthracnose Resist.	1.50	1.45	1.40
Dixie or Cuban Queen Wilt Resistant	2.00	1.95	1.90
Leesburg or Wilt-Resistant Kleckley's Sweet	1.60	1.55	1.50
Charleston Gray, Wilt-Resistant	2.10	2.05	2.00
Charleston Gray, Wilt-Resist., Certified	2.50	2.40	2.35

MUSTARD

Old Fashion	.70	.65	.60
Southern Giant Curled, Long Standing	.60	.55	.50
Florida Broad Leaved	.65	.60	.55
Chinese Broad Leaved	.65	.60	.55
Charleston Gray, Wilt-Resist., Certified	2.50	2.40	2.35

OKRA or GUMBO

Clemson Spineless	.65	.60	.55
White Velvet	.70	.65	.60
Dwarf Stalk Long Green	.65	.60	.55
Perkin's Mammoth Long Green	.65	.60	.55

SPECIAL PRICES FOR MARKET GARDENERS AND TRUCKERS

ONION SEED

	1 to 4-lb. Lots	5 to 9-lb. Lots	Larger Lots
Yellow Globe Danvers	\$3.25	\$3.15	\$3.10
Silver Skin or White Portugal	3.50	3.40	3.35
Extra Early White Pearl	4.15	4.05	4.00
Prize Taker or Spanish King	3.75	3.65	3.60
Yellow Valencia Sweet Spanish	3.75	3.65	3.60

PARSLEY

	1 to 4-lb. Lots	5 to 9-lb. Lots	Larger Lots
Champion Moss Curled	1.35	1.30	1.25
Plain or Single	1.00	.95	.90

PARSNIP

	1 to 4-lb. Lots	5 to 9-lb. Lots	Larger Lots
Sugar or Hollow Crown	1.00	.95	.90

PEPPER

	1 to 4-lb. Lots	5 to 9-lb. Lots	Larger Lots
California Wonder	4.30	4.20	4.15
Florida Giant	4.30	4.20	4.15
Yolo Wonder	4.85	4.75	4.70
Large Sweet Bull Nose	4.65	4.55	4.50
Ruby Giant or World Beater	4.65	4.55	4.50
Ruby King	5.25	5.15	5.05
Pimento	6.15	6.05	6.00
Red Chili	4.10	4.00	3.95
Long Red Cayenne	5.50	5.40	5.30

PUMPKIN

	1 to 4-lb. Lots	5 to 9-lb. Lots	Larger Lots
Virginia Mammoth	1.55	1.50	1.45
Sugar or Pie Pumpkin	1.50	1.45	1.40
Cashaw or Crookneck (Green Striped)	1.55	1.50	1.45
Tennessee Sweet Potato	2.10	2.05	2.00
King of the Mammoths	1.65	1.60	1.55
Large Sweet Cheese	1.55	1.50	1.45
Corn Field Pumpkin	1.50	1.45	1.40

RADISH

TURNIP SHAPED

	1 to 4-lb. Lots	5 to 9-lb. Lots	Larger Lots
Champion	2.15	2.10	2.05
Early Red or Scarlet Turnip80	.75	.70
French Breakfast80	.75	.70
Early White Tipped Scarlet (Sparkler)80	.75	.70
Extra Early Scarlet Globe80	.75	.70

LONG RADISHES

	1 to 4-lb. Lots	5 to 9-lb. Lots	Larger Lots
Long Scarlet Summer80	.75	.70
Long White Icicle80	.75	.70
Brightest Long Scarlet80	.75	.70

WINTER VARIETIES

	1 to 4-lb. Lots	5 to 9-lb. Lots	Larger Lots
Rose China Winter90	.85	.80
Long Black Spanish90	.85	.80
Chinese or Celestial90	.85	.80

RHUBARB or Pie Plant 2.25 2.20 2.15

RHUBARB ROOTS—25¢ each; \$2.50 per dozen.

SALSIFY

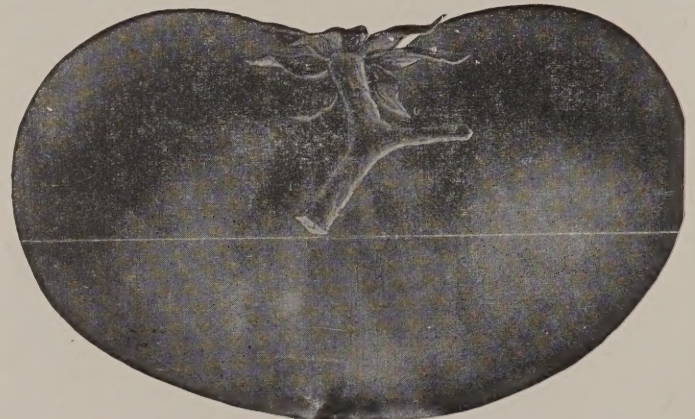
	1 to 4-lb. Lots	5 to 9-lb. Lots	Larger Lots
Mammoth Sandwich Island	3.50	3.40	3.30

SPINACH

	2 to 4-lb. Lots	5 to 9-lb. Lots	Larger Lots
New Zealand80	.75	.70
Norfolk Savoy or Bloomsdale50	.45	.40
Long Standing Bloomsdale Savoy50	.45	.40
Virginia Blight Resistant50	.45	.40

SQUASH or CYMLING

	1 to 4-lb. Lots	5 to 9-lb. Lots	Larger Lots
Wood's Earliest Prolific	\$1.30	\$1.25	\$1.20
Early White Bush or Patty Pan	1.30	1.25	1.20
Mammoth White Bush	1.35	1.30	1.25
Early Golden Bush	1.60	1.55	1.50
Golden Summer Crookneck	1.25	1.20	1.15
Early Prolific Straightneck	1.30	1.25	1.20
Cocozelle or Italian Marrow	1.50	1.45	1.40
Warted Hubbard (Winter)	1.60	1.50	1.40
Table Queen or Acorn	1.35	1.25	1.15



Wood's Famous Brimmer Tomato

TOMATO

	1 to 4-lb. Lots	5 to 9-lb. Lots	Larger Lots
Burpee's Big Boy Giant Hybrid, 1/8 oz. \$5.50; 1/4 oz. \$10.00; 1/2 oz. \$17.50; 1 oz. \$33.00; 1/4 lb. \$98.00; 1 lb. \$295.00.			
Stokescross No. 5, oz. \$2.00; 1/4 lb. \$5.00			
Tree Tomato—Packet 25¢.			
Homestead 1102, Wilt-Resistant	\$7.50	\$7.40	\$7.30
Marglobe, Wilt-Resistant, Certified...	6.00	5.90	5.80
Marglobe, Wilt-Resistant	5.75	5.65	5.55
Rutgers, Wilt-Resistant, Certified	4.75	4.65	4.55
Rutgers, Wilt-Resistant	3.85	3.70	3.55
Break O'Day	6.50	6.40	6.30
Oxheart	11.00	10.90	10.80
Southland	7.00	6.90	6.80
Spark's Earliana	7.00	6.90	6.80
Bonnie Best	5.00	4.90	4.80
Chalk's Early Jewel	5.00	4.90	4.80
June Pink	7.50	7.40	7.30
Wood's Improved Ponderosa	9.00	8.90	8.80
Wood's Famous Brimmer	11.00	10.90	10.80
Stone	5.00	4.90	4.80
Greater Baltimore	5.00	4.90	4.80
Golden Ponderosa	9.50	9.40	9.30
Yellow Plum	7.50	7.40	7.30
Yellow Pear	7.50	7.40	7.30

TURNIP

	2 to 4-lb. Lots	5 to 9-lb. Lots	Larger Lots
Extra Early White Milan60	.57	.55
Extra Early Purple Top Milan.....	.60	.57	.55
Mammoth Purple Top White Globe ..	.50	.47	.45
Improved Purple Top White Globe...	.55	.52	.50
Early Red or Purple Top Strapleaf...	.50	.47	.45
Large White Norfolk Globe50	.47	.45
Pomeranian White Globe50	.47	.45
Long White Cowhorn50	.47	.45
White Egg50	.47	.45
Purple Top Yellow Aberdeen50	.47	.45
Amber or Yellow Globe50	.47	.45
Golden Ball or Orange Jelly50	.47	.45
Mixed Turnip Seed50	.47	.45

SALAD VARIETIES

	2 to 4-lb. Lots	5 to 9-lb. Lots	Larger Lots
Seven Top45	.42	.40
Southern Prize45	.42	.40
Shogoin50	.47	.45

RUTABAGA or SWEDE

	2 to 4-lb. Lots	5 to 9-lb. Lots	Larger Lots
Improved Purple Top Yellow55	.52	.50
American Purple Top Yellow50	.47	.45